

ArcGIS DATA MAINTENANCE TOOLS

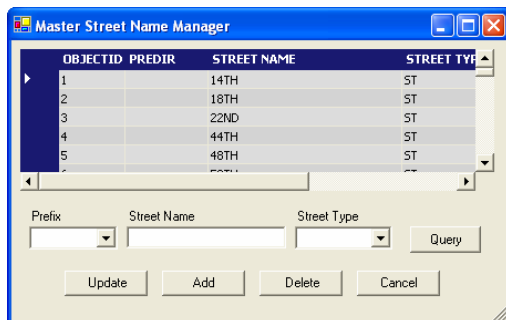
ArcGIS Data Maintenance Tools are a suite of attribute editing tools designed to provide an intuitive user interface and enforce strict data validation rules. Municipal organizations rely on accurate addressing information to perform geocoding functions, issue building permits, dispatch 911 calls and for utility billing. **ArcGIS Data Maintenance Tools** work with any ENTERPRISE GEODATABASE to maintain a central repository of standardized address data for use across the entire organization.

Ensure the Accuracy of Your Data

It is often the case that address and legal description information is stored and maintained in an organization across multiple systems in various departments. This usually results in data inconsistency. Using **ArcGIS Data Maintenance Tools** during the plat entry process ensures that the newly created parcels and street centerlines are validated with existing information in the geodatabase.

Standardize Street Names

Consistent street naming is crucial to perform address matching and geocoding functions. **ArcGIS Data Maintenance Tools** provide a custom user interface to search, add, delete and update street names.

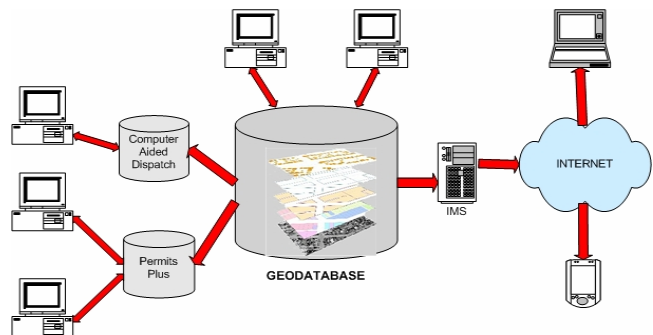
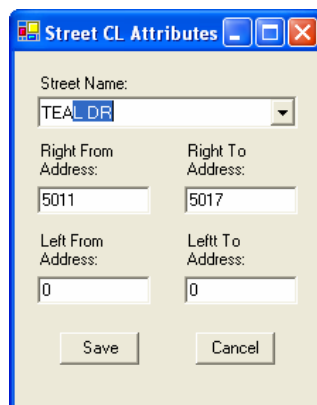


The Street Name Editor provides the following validation checks:

- ◆ prevents duplicate entry of existing street names
- ◆ prevents deletion of a street name if property address or street centerlines are related

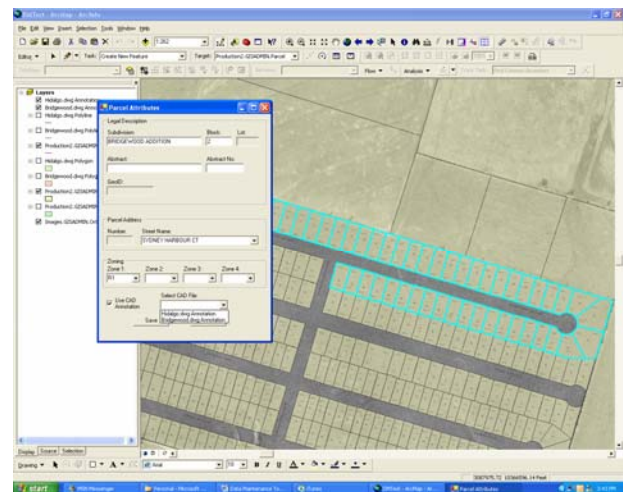
Validate Street Centerline Attributes

ArcGIS Data Maintenance Tools' Street Centerline Editing Interface uses a drop down list of valid street names to ensure consistency and eliminate typographical errors. An auto-complete feature increases data entry productivity. Address ranges are validated by comparing "from" and "to" ranges and checking existing street centerlines for address range overlaps.



Fast Parcel Attribute Capture

ArcGIS Data Maintenance Tools' Parcel Editing Interface uses the same auto-complete street name drop down list used by the Street Centerline Editing Interface for quick and accurate addressing. The user interface provides the user the ability to input the legal description and zoning of the parcel. Additionally, the Parcel Editing Interface can read CAD annotation features to auto-populate house numbers, and lot numbers.



Geodatabase Compatible

ArcGIS Data Maintenance Tools are designed to utilize the benefits of the geodatabase. Relationship classes are used to rapidly validate features. All drop-down lists containing street types, directional prefixes and zoning are populated using geodatabase domains. This gives the geodatabase administrator the ability to edit the content of the drop down lists. The tools fully support versioned edit sessions for use in multiple editor environments.

Flexible and Powerful

IT Nexus will customize the **ArcGIS Data Maintenance Tools** to fit your geodatabase and unique requirements. Please call (940) 591-9699 for more information.